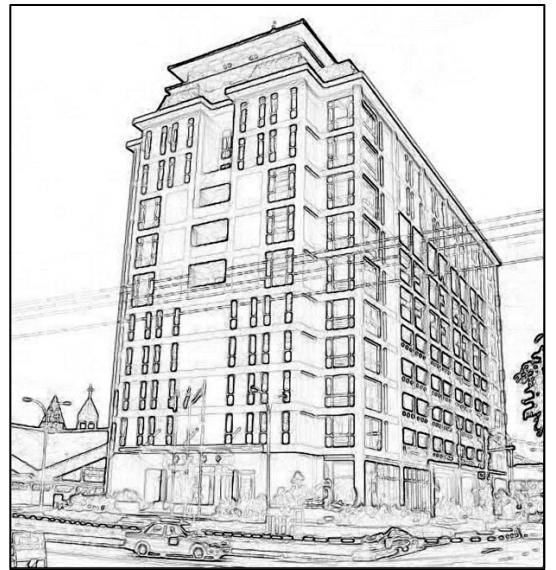
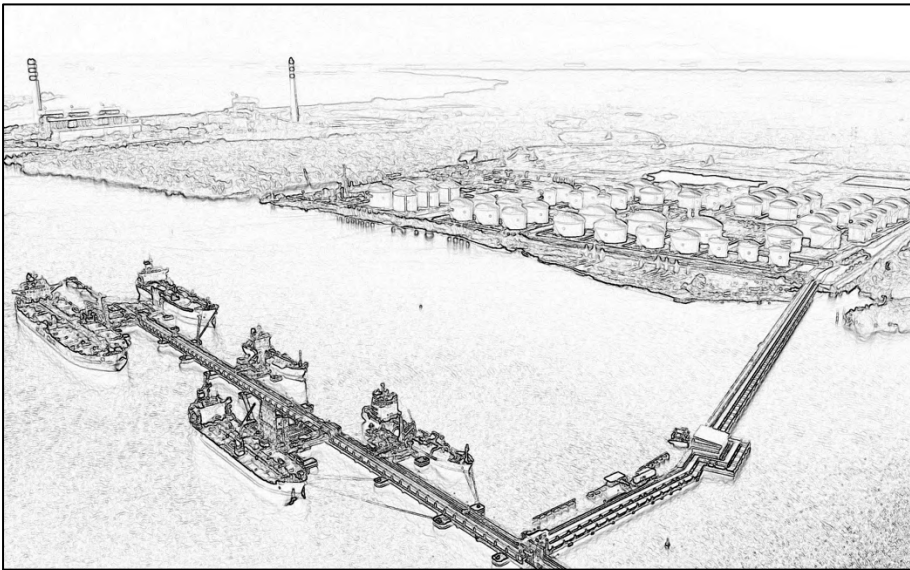


E CHARIS CONSULT  
*We are here, for you*



COMPANY PROFILE



## Summary

<i>The Company</i> .....	3
<i>Managing Director</i> .....	4
<i>Team</i> .....	6
<i>Project Portfolio</i> .....	8
Agriculture .....	8
Airport .....	8
Building Demolition .....	8
Commercial .....	9
High-Rise & Mid-Rise .....	10
Industrial .....	13
Institutional .....	13
Oil & Gas .....	14
Petrol Station .....	15
Residential .....	16
Road & Bridge .....	17



## The Company

### **E CHARIS CONSULT (M) SDN BHD**

Company Register: 103 1886-P V

Year Establish: 2002

Main Office: 3A, Jalan Bakawali 36, Taman Johor Jaya, 81100, Johor Bahru, Malaysia

Telephone: +6 07 355 1325  
+6 07 361 5913

Principal/Director: Ir. Wong Choo Hooi

Geotechnical Consultant: BMT Asia Pacific Pte Ltd

Marine & Coastal Consultant: BMT Asia Pacific Pte Ltd

Engineering Services: Civil & Structural Engineering  
Geoenvironmental  
Geotechnical & Foundation  
Industrial Architecture  
Investigation Service  
Maritime, Coastal & Pipeline  
Project Management  
Water Resources & Environmental



## Managing Director

### Ir. Wong Choo Hooi



Date of Birth: 24 December 1964  
Education: Bachelor of Engineering (Civil) (National University of Singapore)  
Qualifications: Member of the Institution of Engineer, Malaysia (M.I.E.M.)  
Registered Professional Engineer (Civil), Malaysia  
Registered Professional Engineer (Civil), Singapore  
Contact: +60 19 752 7118

### Employment History

Dec 2002 – Present

***E Charis Consult (M) Sdn Bhd***  
***E Charis Ingenieur (M) Sdn Bhd***  
***Civil & Structural Engineering Consultancy Companies***  
***Principal/Director***

Feb 1999 – Dec 2002

***Omni Design Sdn Bhd, Malaysia***  
***Civil & Structural Engineering Consultancy Company***  
***Executive Director***

A Bumiputra Civil & Structural Engineering Consultancy Company. Projects undertaken were the design and construction supervision of Government Schools throughout the state of Johor Bahru.

Aug 1996 – Jan 1999

***Meinhardt Singapore Pte Ltd, Malaysia***  
***An International Multi-Disciplinary Engineering Consultancy Company***  
***General Manager of Meinhardt Malaysia (JB) Sdn Bhd***

Pioneered in setting up the Johor Bahru Branch Office. I was involved in managing the office, procurement of project and as a technical adviser/manager for all projects under the Branch office. Actively involved in marketing the Meinhardt Group in Malaysia.

Projects involved:

- Civil/Structural design of 45 units of Detached factory at Pasir Gudang, Johor Bahru. [RM 32M]
- Structural design of 469 units of single storey and double storey terrace houses at Segamat, Johor. [RM 25M]
- Proposed Development of 5 storey shop office with 2 level basements [RM 22M]
- Proposed mixed Development along Jalan Tebrau, Johor Bahru. (Civil/ Structural design) [RM 5B]
- Development of Hypermarket at Jalan Sri Pelangi, Johor Bahru. [RM 45M]
- Civil/Structural design of a proposed 12 storey office block at Jalan Keris, Johor Bahru. [RM 20M]



Oct 1993 - Aug 1996

**Public Works Department, Singapore**  
**Building Control Division**  
**Executive Engineer**

Involved in processing and approving of building structural plans in accordance with the provisions of the Building Control Act.

Projects of interest approved by me

- Floating foundation for a 10-Storey shopping complex/apartment on marine clay at Geylang area.
- The Safti Bridge which was designed as a cable stayed suspension bridge.

Sep 1990 - Oct 1993 **Public Works Department, Singapore**

**Chief Structural Engineer's Office**  
**Design Engineer**

Involved in the structural design, site supervision, project co-ordination and appraisal of government building.

- Design of Marina Bridge over Singapore river [S\$ 50M]
- Assist in the design of KJE/PIE interchange. [S\$ 30M]
- The conservation of the former Saint Joseph Institution to Fine Art's Museum. [S\$ 30M]
- The design of 2 blocks (13-Storeys & 19-Storeys) of residential apartments for the Gurkha Contingent [S\$ 30M]
- The structural design of Bukit Batok Polyclinic [S\$ 10M]
- Structural design of the Crescent Girls' Secondary School [S\$ 12M]
- Structural design of the Dunman High School [S\$ 15M]
- Structural design of the Bishan Secondary School [S\$ 10M]
- Ang Mo Kio Community Hospital - As the Resident Engineer for the project. [S\$ 30M]

Nov 1989 - Sep 1990

**Steen Consultants Pte Ltd, Singapore**  
**An Established Multi-Disciplinary Engineering Consultancy Company**  
**Design Engineer**

Involved in the design, co-ordination, and submission of:

- 42-storey office/commercial building with 2 basements (The Concourse) at Beach Road [S\$ 250M]
  - Main designer for the tower block. (Structural steelwork)
  - Checking of connection details and shop drawings of structural steelwork prepared by contractor for approval.
- 28-storey office building with 2 basements (Ocean Tower) at Collyer Quay/Raffles Place. [S\$ 98M]
  - Checking connection details and shop drawing of structural steelwork prepared by contractor for approval.
- The 33-Storey Heeren Building at Orchard Road [S\$ 120M]
  - Preliminary structural framing design.

May 1988 - Oct 1989

**Ng Say Hock & Associates, Singapore**  
**A Sole Proprietor Civil & Structural Engineering Consultancy Company**  
**Graduate Engineer**

Involved in the design, co-ordination, submission, and site supervision for the following projects:

- Four units of town houses at Holland Grove Road [S\$ 1.2M]
- Single-detached house at King Albert Park [S\$ 0.6M]
- Detached house at Lorong Merican [S\$ 0.4M]
- Upgrading of existing factory for M/s Dyno Industries [S\$ 0.4M]
- Surface drainage design at CHIJ Primary School [S\$ 0.1M]
- Semi-detached house at Goodman Road [S\$ 0.7M]
- 3-storey semi-detached house at Bedok Ave. [S\$ 1.0M]
- 3-storey semi-detached house at Telok Kurau [S\$ 0.5M]



## Team

E Charis design and drafting team consist of the following people:



**Noor Dilaila Binti Arifin**  
*Senior Executive / Office Manager*

Certificate in Civil Engineering  
15 years of drafting experience in Civil Infrastructure works, Reinforced concrete high rise buildings and Steel portal frame structures. Pioneer member of the team.



**Kamalrulezuan Bin Eusa**  
*Senior Executive*

Certificate In Mechanical Engineering  
18 years of drafting experience in Civil Infrastructure works, Reinforced concrete and Steel structures. Government Liaison for all project submission. Pioneer member of the team.



**Hirzee Mansur**  
*Senior Executive*

Certificate in Architecture  
11 years' experience in Architecture design and drafting. Government Liaison for all project submission. Pioneer member of the team.



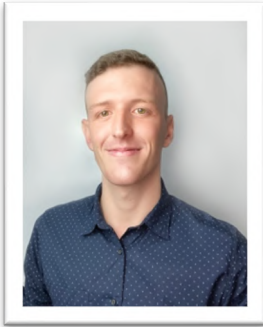
**Siti Hajar Binti Ishak**  
*Executive Engineer*

Bachelor of Civil Engineering (Hons) (UTHM)  
8 years of experience in Civil Infrastructure and Structural Design and drafting of projects.



**Nurul Farhana Binti Ramli**  
*Executive Engineer*

Bachelor of Civil Engineering (Hons) (UiTM)  
8 years of experience in Civil Infrastructure and Structural Design and drafting of projects.

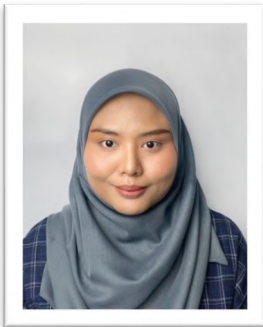


**Leonardo Sangalli**

*Design Engineer*

Bachelor of Civil Engineering (Hons) (UNIVATES – Brazil)

1 year of experience in Civil Infrastructure and Structural Design and drafting of projects.



**Siti Naziatul Amira Binti Abdul Wahid**

*Design Engineer*

Diploma in Civil Engineering (UITM)

1 year of drafting experience in Civil Infrastructure projects.



## Project Portfolio

### Agriculture



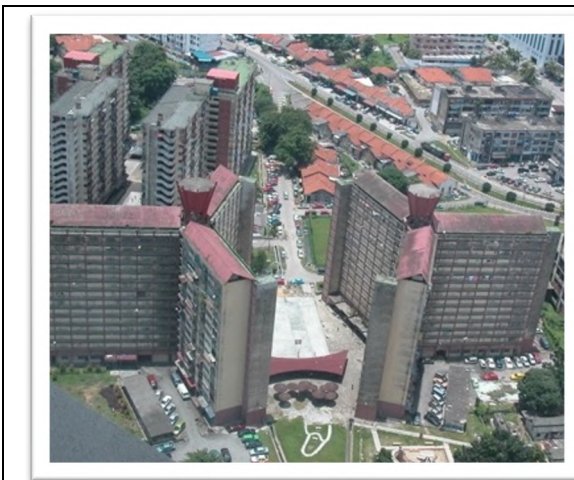
UPM Serdang in Serdang, Selangor for Farm Fresh Malaysia.

### Airport



Executive Jets Asia Hangar at Senai Airport with castellated beam spanning over 50m.

### Building Demolition



Proposed demolition works on the Existing Lumba Kuda Flats, Johor Bahru. Photograph taken before demolition on July 2002.





Demolition works on the triangular shape 16-storey blocks by pneumatic hammers mounted on SK-04 excavators.



Demolition works on the conventional designed rectangular shape 18-storey blocks.

### Commercial



Persekutuan Tionghua office block (10-storey with 1 level basement. The entire building is supported by a 2m depth cellular raft foundation).

Shopping Complex At Taman Ungku Tun Aminah for M/s Family Food Court.

Johor Port operation's building extension.

Masai Bazaar for M/s Fasda Height.

Masai Market at Pasir Gudang.

Permas City consisting of two 7-storey tower blocks, 1 level sub-basement and 3-storey podium shopping mall.



Daiman Bowl at Taman Johor Jaya.



Rivercity Business Park.

### *High-Rise & Mid-Rise*



#### THE ALIFF APARTMENTS

Proposed 3 Blocks of 25 Storey Residential Apartment consisting of 536 apartment units at Jalan Tahana Johor Bahru for MB Land Sdn Bhd.



#### ALIFF AVENUE APARTMENTS

Proposed 2 Blocks of 25 Storey Residential Apartment consisting of 283 apartment units and 10 shop lots at Jalan Tampoi Johor Bahru for MB Land Sdn Bhd.



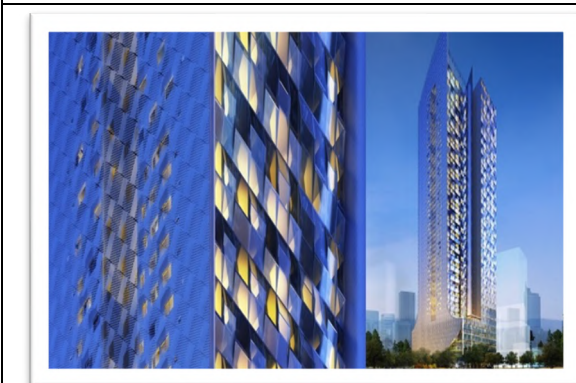
#### PANDAN RESIDENCE 1

Proposed 30 Storey Residential Apartment at Pandan Johor Bahru consisting of 283 apartment units for Mahabuilders Bhd.



#### PANDAN RESIDENCE 2

Proposed 30 Storey Residential Apartment at Pandan Johor Bahru consisting of 186 apartment units for Mahabuilders Bhd.



#### WF TOWER

Proposed 55 Storey Super Condominium at Jalan Abdullah Tahir Johor Bahru consisting of 450 apartment units for WF Group.



WF HAMILTON

Proposed 55 Storey Super Condominium at Jalan Senyum Johor Bahru for WF Group.



TEBRAU TEGUH

Proposed 2700 units of Low Cost Apartments for Tebrau Teguh Berhad. (Plot 2A).



TEBRAU TEGUH

Proposed 2700 units of Low Cost Apartments for Tebrau Teguh Bhd (Plot 2B).





D LARKIN RESIDENCE

Proposed 12-storey residential apartment with 120 apartment units at Larkin Johor Bahru for Mahabuilders Bhd.



### Industrial

	<p>Litton Kester Solder factory extension at Senai, Johor.</p>
	<p>Aurum Precast at Pekan Nanas, Johor.</p>
<p>Sanden International factory extension at Pasir Gudang.</p>	
<p>Rotol International factory in Singapore (steelwork roof design).</p>	
<p>Civil infrastructure design and construction supervision of a 22 acres industrial land at Bandar Seri Alam.</p>	
<p>Rex Plastic building extension at Taman Desa Cemerlang, Johor.</p>	
<p>Addition and alteration to existing PG Bando factory at Kulai, Johor.</p>	
<p>Proposed 8 units of detached factory at Taman Desa Cemerlang for M/s Tanah Bumimas Sdn Bhd.</p>	

### Institutional

	<p>Kolej Tunku Abdul Rahman at Segamat – Construction a Multi-Purpose Hall and a Sport Complex with an Olympic size swimming pool.</p>
	<p>Seri Alam 2 Secondary School for Kementerian Pendidikan Malaysia (design &amp; build).</p>
<p>Pengerang Secondary School for Kementerian Pendidikan Malaysia (design &amp; build).</p>	
<p>Bandar Tenggara Secondary School for Kementerian Pendidikan Malaysia (design &amp; build).</p>	
<p>Classroom &amp; Auditorium Block for Kolej YPJ at Bukit Senyum Johor.</p>	
<p>Bandar Putra Segamat Secondary and Primary School for Kementerian Pendidikan Malaysia (design &amp; build).</p>	
<p>Taman Tasik Utama Secondary School at Melaka for Kementerian Pendidikan Malaysia (design &amp; build).</p>	



TAR College Segamat Sport and Swimming Complex.

## Oil & Gas



### TANJUNG BIN VITOL

Proposed Tank Farm and Terminal at Tanjung Bin Johor Vitol Tank Terminals International B.V. ("VTTI"), part of the Vitol Group, entered into a joint venture agreement with MISC Berhad ("MISC") to incorporate a joint venture company, Asia Tank Terminal Limited, to develop an oil terminal in Tanjung Bin, located in south-west Johor, Malaysia.

The terminal company, ATT Tanjung Bin Sdn. Bhd. executed a long-term lease agreement with Seaport Worldwide Sdn. Bhd. in September 2008 for 50 hectares of land at the Tanjung Bin Petroleum and Maritime Industry Centre. The terminal company will design, construct, commission and operate a 741,200 cbm terminal for storage of fuel oil, middle distillates and light distillates.

Client : VITOL Netherlands.

Project Cost : USD 0.7 Billion.

Project Involvement: As the Local Submitting Professional Engineer.



### RE-GASIFICATION TERMINAL PETRONAS

PETRONAS' plan for the development of the project, also referred to as Re-gasification Terminal (RGT) Sungai Udang, was officially announced by the Prime Minister on 10 June 2010 when he presented the 10th Malaysia Plan in Parliament. The project was then estimated to cost RM3 billion network.

Situated three kilometres offshore Sungai Udang, Melaka, the RGT is considered an engineering feat by the industry. Developed based on a revolutionary design, it comprises the world's first-of-its-kind re-gasification unit on an island jetty (JRU), two floating storage units (FSU) and a three-km sub-sea pipeline connecting to a new 30-km onshore pipeline that links to PGB's existing Peninsular Gas Utilisation (PGU) pipeline

Project Involvement: As the Local Submitting Professional Engineer for BMT ASIA PACIFIC PTE LTD





#### PENGERANG DEEPWATER

ECC was responsible for the submission of jetty 3 for client Dialog.



#### TANJUNG BIN MALAKOFF

ECC was responsible for the submission of a jetty for client Malakoff.

### *Petrol Station*



ProJET Station at Jalan Tampoi Utama (Architectural + Structural).

ProJET Desa Tebrau (Architectural + Structural).

ProJET Taman Tun Aminah (Architectural + Structural).



Petron at Jalan Saleng Senai for Azam Inovasi (Architectural + Structural).

Petron UTM Jalan JB-Pontian (Architectural + Structural).



	<p>Shell Seri Alam Johor Bahru (Architectural + Structural).</p>
-----------------------------------------------------------------------------------	------------------------------------------------------------------

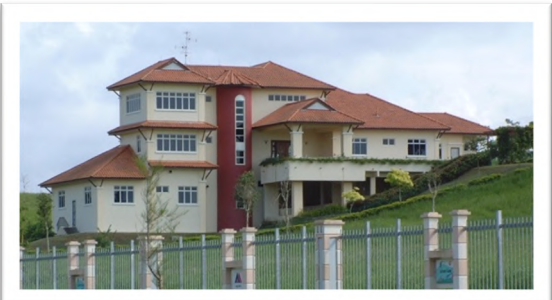
<p>Shell Luruhmas Pasir Gudang (Architectural + Structural).</p>
<p>Shell Prima Saujana, Kajang, Selangor (Architectural + Structural).</p>
<p>Shell Aman at Seremban (Architectural + Structural).</p>
<p>Shell Lukut 2 Port Dickson with a Fast Food Restaurant (Architectural + Structural).</p>
<p>Shell Seri Alam with a two storey Fast Food Complex attached (Architectural + Structural).</p>
<p>Shell Pelangi Indah (Architectural + Structural).</p>
<p>Shell UTM Jalan JB-Pontian (Architectural + Structural).</p>

<ul style="list-style-type: none"> <li>• Assisted SKM/ Esso in the submission :             <ul style="list-style-type: none"> <li>○ Esso Petrol Station at Jalan Masai-Kong Kong</li> <li>○ Rebranding of Mobil to Esso Petrol Stations for area of Majlis Kulai, Majlis Perbandaran Johor Bahru Tengah, Majlis Bandaraya Johor Bahru</li> <li>○ Bomba submission for Esso Segamat and Jalan Skudai</li> </ul> </li> </ul>
-----------------------------------------------------------------------------------------------------------------------------------------------------------------------------------------------------------------------------------------------------------------------------------------------------------------------------------------------------------------------------------------------------------------------------

	<p>Caltex Petrol Station at Taman Putri Wangsa (Architectural + Structural).</p>
------------------------------------------------------------------------------------	----------------------------------------------------------------------------------

### *Residential*

	<p>194 Units of 2-storey terrace house at Bandar Putra Kulai (Zone 4C Parcel 4).</p>
-------------------------------------------------------------------------------------	--------------------------------------------------------------------------------------

	<p>Total of 3 Units of Bungalow at Leisure Farm.</p>
-------------------------------------------------------------------------------------	------------------------------------------------------

<p>5 Storey Teacher's Apartment for Kementerian Pendidikan Malaysia (Total 100 Dwelling units).</p>
<p>356 Units of Single Storey Terrace House at Bandar Putra Segamat.</p>
<p>380 Units of Single Storey Terrace House at Cahaya Kota Putri.</p>





107 Units of 3 Storey Shop Apartment at Cahaya Kota Putri.
363 Units of 2 Storey Terrace House at Taman Seri Austin.
162 Units of 3 Storey Shop Apartment at Bandar Pulaui Jaya.
258 Units of Double Storey Terrace Houses Phase 5A4 at Bandar Seri Alam, Johor.
173 Units of Double Storey Terrace Houses at Phase 4A Seri Austin.
120 Units of Double Storey Terrace Houses at Phase 5H1 Seri Austin.
183 Units of Single Storey Terrace House at Bandar Putra Kulai (Zone 4D Parcel 4).
255 Units of Double Storey Terrace Houses Phase 5B4 at Bandar Seri Alam Johor.
64 Units of Cluster Houses and 22 Units of Semi Detached Houses at Phase 5F Seri Austin.
215 Units 2 Storey Terrace Houses at Zone 4D1 Taman Lagenda Putra.
37 Units of 2 Storey Terrace Houses Zone 1D01 Taman Lagenda Putra.
52 Units of 2 Storey Terrace Houses Zone 2C02 Taman Lagenda Putra.
112 Units of Semi Detached Houses at Desaru Utama.
206 Units of Single Storey Terrace House Ph 19 at Bandar Putra Segamat.
84 Units of Semi Detached Houses at Phase 6B Seri Austin.



IOI Phase 18C.



Emerald Residenz at Bandar Seri Alam, Johor.



Topaz Residenz at Bandar Seri Alam, Johor.

### *Road & Bridge*



JKR Road J4 (Package B11) Jalan Lima Kedai/Gelang Patah road upgrading.



Proposed construction of a 100 ft road leading into MRSM Bandar Seri Alam, Johor Bahru. Earthworks computation, design of external sewer line and external water reticulation leading to the reservoir.